



SHELTON **WebSPECTOR**

FFI SYSTEM (FABRIC FORMING INSPECTION)

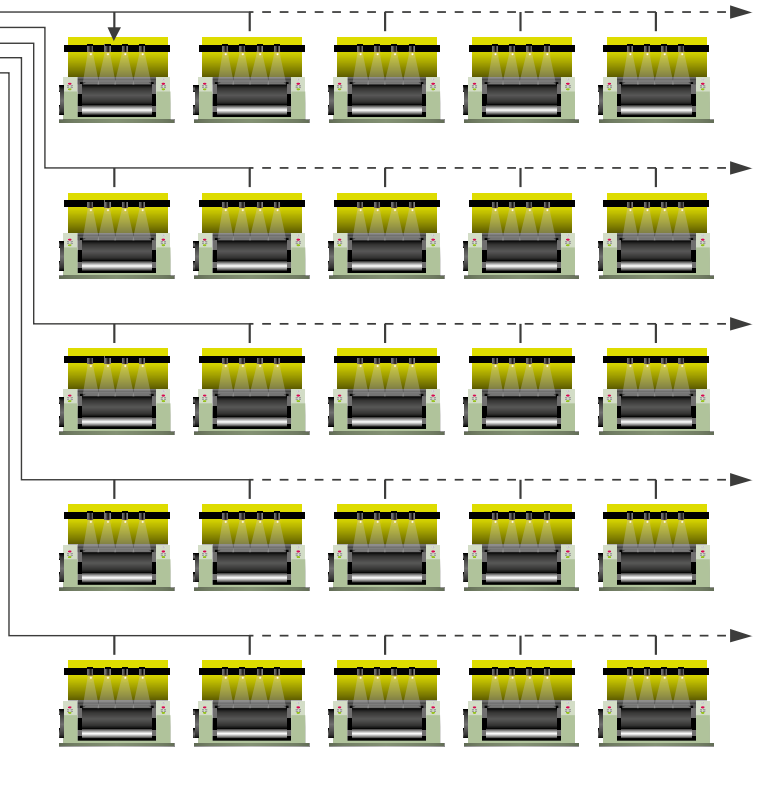


Shelton WebSpector FFI is a real time textile inspection system designed to run on fabric forming machines such as looms and knitting machines.

- Reduce waste by eliminating long running and repeating defects.
- Accurate roll map created.
- Complete quality control data analysis per machine.
- Additional data log available.
- Unique lighting provides full surface inspection with multiple image planes.
- Inspection of woven jacquard fabric.



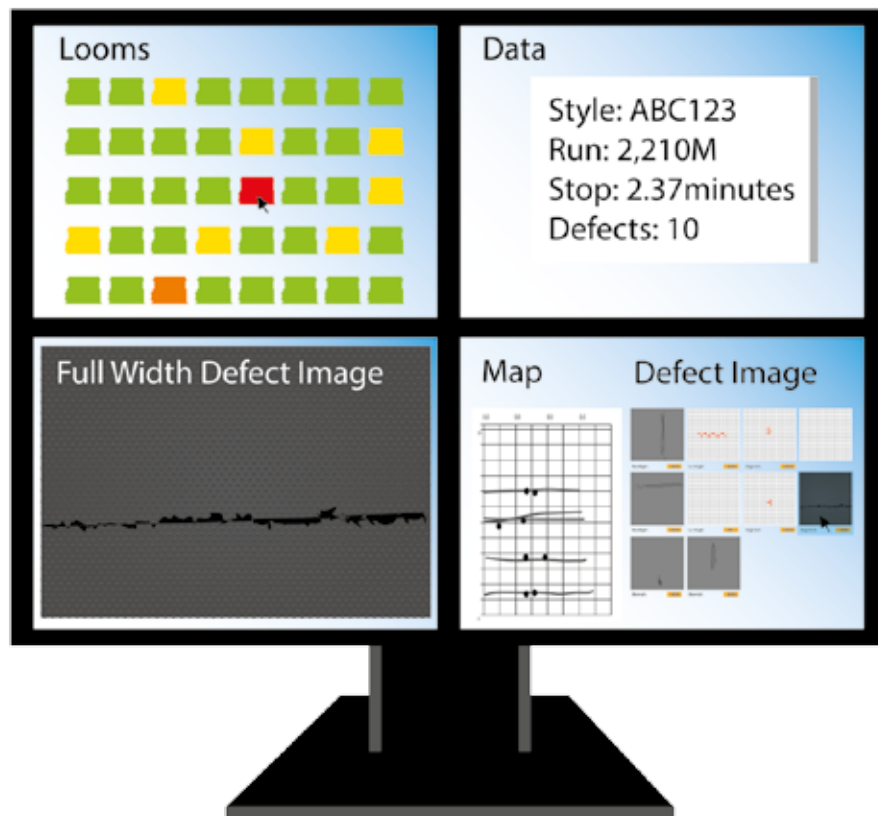
LOOMS FITTED WITH CAMERA SYSTEMS



The FFI systems can be linked to a central control station where the current and past workorder information can be viewed.

In addition when a serious defect is detected an alarm can be sent to the central display to enable action to be taken.

Statistical analysis can be performed of recorded information eg. most common defects, defects due to weaving, defects due to yarn (warp and/or weft).



In addition to very sensitive detection from powerful defect detection algorithms the FFI systems can be set up with real time defect classification and grading, so that auto stopping for certain defects and not others can be implemented and reports can be run from the system data, without pre analysis by an operator.